

REV 8 PRIME

SPECIFICATION SHEET
NEW CONSTRUCTION - W+RGB

QUIET CEILING DESIGN HIGH LUMEN RECESSED DOWNLIGHT

Housing

Aperture : Ø8.1" | Oversize Trim : 8.46" | Ceiling Cutout : 8.25"
Maximum Ceiling Thickness : 1.5" | Height : 8.6" | Weight : 17.63 / 18.82 lbs

Material

Housing : Forged Aluminum Heatsink
Reflector : Flow Forming Aluminum

Power Input

200W Type A (W=100W, RGB=100W), 200W Type B(W=150W, RGB=50W)
120V, 277V

Lumen Output

13,250 lm (200W Type A), 14,145 (200W Type B)

Dimming

DMX : High resolution dims to 0.1%

Color Quality

CRI 85

Rated Life

> 60,000 Hours (L70)

Finish



Color Temperature



Optics



Warranty

5 Year limited warranty

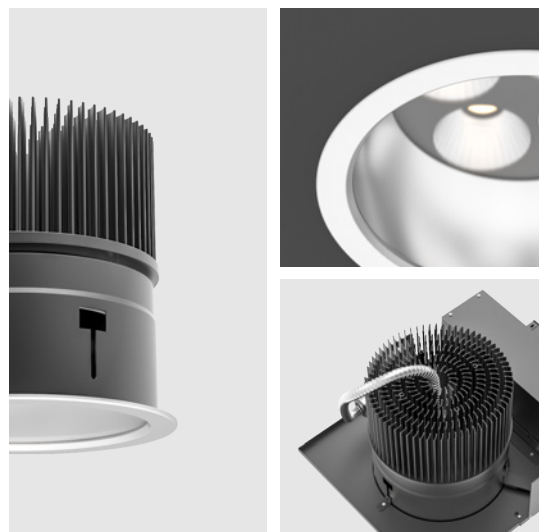
Listing



Precision Engineered For High Performance.

8-inch aperture high lumen recessed downlight utilizing Meteor Lighting's proprietary ColorFlip™ W + RGB solution, that gives you True White light and unlimited RGB possibilities.

This product is compatible with all DMX control systems and follows ANSI E1.20 RDM protocol. You can now get white and RGB colors all from a single light source.



METEOR

meteor-lighting.com

SPECIFICATION

PROJECT NAME	DATE
<input type="text"/>	<input type="text"/>
CATALOG #	QUANTITY
<input type="text"/>	<input type="text"/>

R8PN	MODEL	REV 8 PRIME WITH NEW CONSTRUCTION FRAME		
<input type="text"/>	WATTAGE	200A W=100W/RGB=100W	200B W=150W/RGB=50W	
308C	CCT / CRI	308C 3000K / CRI 85 +RGB		
<input type="text"/>	VOLTAGE	120 120V	277 277V	
<input type="text"/>	DIMMING	DMX DMX dims to 0.1% (XLR Sockets)	DMX(RJ45) DMX dims to 0.1% (RJ45 Sockets)	
<input type="text"/>	BEAM ANGLE	45 45°	55 55°	WD¹ Wide (With Diffuser)
<input type="text"/>	FINISH²	BLK Black	WHT White	
<input type="text"/>	ACCESSORIES	NO No Accessories SCA810 Sloped Ceiling Adapter 8°-12° SCA825 Sloped Ceiling Adapter 23°- 27°	DF³ Diffuser SCA815 Sloped Ceiling Adapter 13°-17° 2CPL 2' X 2' X 1" Custom Metal Ceiling Panel	SPD⁴ Surge Protector SCA820 Sloped Ceiling Adapter 18°-22° BUB Butterfly Bracket

¹ Please factor in change in lumen output with diffuser (-20% with WD; -12% with other degrees).
² Finish indicates trim only, with standard matte silver reflector.
³ Please factor in change in lumen output with diffuser (-20% with WD; -12% with other degrees).
⁴ Surge protector for up to 10KV. Applicable for unstable mains or facilities using high-power machinery.

TECHNICAL DETAILS

Electrical

- 13,250 lm (200W Type A)
- 14,145 lm (200W Type B)
- Power Input: 120V or 277V
- Operating Temperature: -40°F~112°F
- Surge Protection: Built-in is 4KV
- Power Factor Greater than 0.9

LED Features

- Color Temperature : 3000K+RGB
- CRI 85
- Long lasting LED luminaire tested under TM21 lumen maintenance L70 @ 60,000 Hrs

Optics

- Flow Forming Aluminum Reflector
- Beam Angle : 45°, 55°, Wide (With diffuser)

Advanced Dimming

- Proprietary VX Driver™ is incorporated to all dimming options for video flicker-free lighting
- DMX : High resolution dims to 0.1% (Supports ANSI E1.20 RDM protocol)

New Construction Housing

- Aperture : Ø8.1"
- Height : 8.6"
- Weight : 17.63 lbs/ 18.82 lbs
- Material : Forged Aluminum Heatsink
- Non-IC Rated, insulation must be kept >1ft from housing
- Oversize Trim : 8.46"
- Ceiling Cutout : 8.25"
- Maximum Ceiling Thickness : 1.5"
- Tool-less top access allows service from above and below
- Light engine, optics, and driver(s) accessible from below ceiling

*Note: C-Channel / Mounting Channels / T-Bar Hangers are purchased from a third party

Warranty

- 5-year limited warranty

Listing

- ETL Damp Location Listed
- FCC

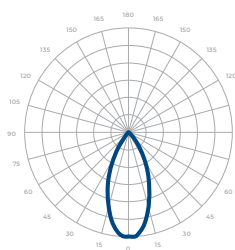
PERFORMANCE SUMMARY*

Delivered Lumens					Current Consumption		
WATTAGE/CCT	R	G	B	W	WATTAGE / VOLT	120V	227V
200W/ TypeA	33W	33W	33W	100W	200W	1.8A	0.9A
	615lm	4,075lm	480lm	8,080lm			
200W/ Type B	17W	17W	17W	150W			
	220lm	1,700lm	210lm	12,015lm			

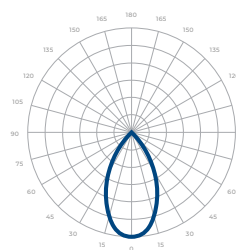
*Beam Angle: 45° *Tolerance ±8%

PHOTOMETRICS

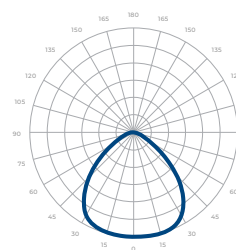
Below is a typical photometric representation of the Rev 8 Prime fixture. Please download IES files to ensure exact photometric value.



45°



55°



WIDE

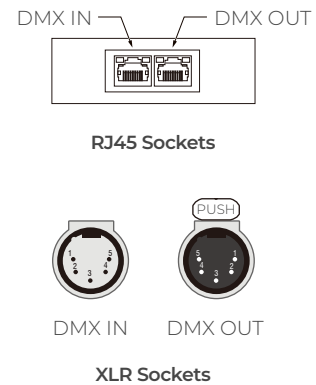
DMX REQUIREMENTS

The Rev 8 W+RGB fixture with DMX is a **four channel dmx** unit. When placing an order, please indicate DMX address. (The DMX address will be listed on the back of the fixture). Do not connect more than 32 fixtures per DMX daisy chain.

Fixture	DMX Address			
	Red Control (ex. X)	Green Control (ex. X+1)	Blue Control (ex. X+2)	White Control (ex. X+3)
#1	1	2	3	4
#2	5	6	7	8
#3	9	10	11	12

The fixture can be connected with RJ45 or XLR sockets. DMX cables **are not** included; please refer to compatible DMX cabling list for more information. The final fixture on each daisy chain should be terminated by the use of a DMX terminator purchased from a 3rd party or from Meteor.

CONNECTION	RJ45 (CAT5e)	5-PIN XLR
Common	WHITE/BROWN (PIN 7) & BROWN (PIN 8)	PIN 1
Signal -	ORANGE (PIN 2)	PIN 2
Signal +	WHITE/ORANGE (PIN 1)	PIN 3
Spare	-	PIN 4
Spare	-	PIN 5

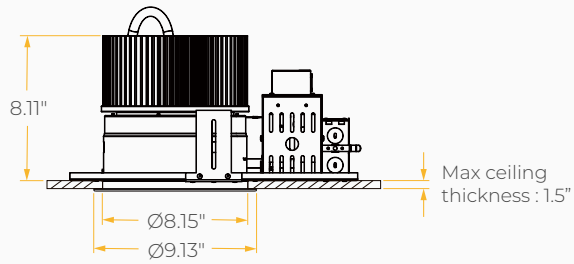
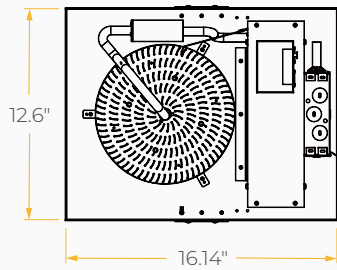


COMPATIBLE DMX CABLING LIST

DMX uses a cable consisting of two twisted pairs plus a shield to carry data. The cable must be specifically impedance matched for the digital DMX signal, meaning that microphone cable or other non-rated cable **must not be used to carry DMX**. Network cable (Cat5, 5e or 6 cable) may be used to carry DMX in an installation; however special consideration must be given to shielding and termination. Under no circumstances should solid core cable like Cat5 be terminated into a screw down connector.

Meteor recommends the use of Belden 9729 or Belden 9841 for DMX installation. Belden 9729/9841 is a two pair cable, which allows for a spare pair for 'out and back' type terminations if needed.

DIMENSIONS



Sloped Ceiling Adapter

