

# REV 4

SPECIFICATION SHEET  
NEW CONSTRUCTION - W+RGB

## QUIET CEILING DESIGN HIGH LUMEN RECESSED DOWNLIGHT

### Housing

Aperture : Ø4.3" | Oversize Trim : 5.3" | Ceiling Cutout : 5"  
Maximum Ceiling Thickness : 2" | Height : 8" | Weight : 8.8 lbs

### Material

Housing : Extruded Aluminum  
Reflector : Flow Forming Aluminum

### Power Input

50W (W=25W, RGB=25W) | 120V, 277V

### Lumen Output

3,280 lm (50W)

### Dimming

DMX : High resolution dims to 0.1%

### Color Quality

CRI 85, CRI 93

### Rated Life

> 60,000 Hours (L70)

### Finish



Black



White

### Color Temperature



3000K

+



ColorFlip™ W+RGB

### Optics



45°



55°

### Warranty

5 Year limited warranty

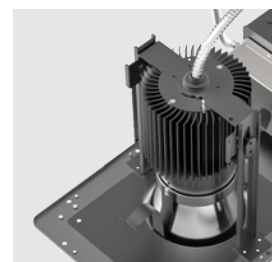
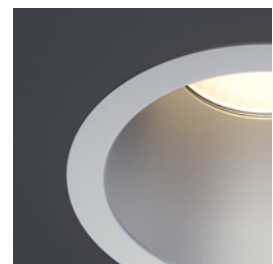
### Listing



## Precision Engineered For High Performance.

4-inch aperture high lumen recessed downlight utilizing Meteor Lighting's proprietary ColorFlip™ W + RGB solution, that gives you True White light and unlimited RGB possibilities.

This product is compatible with all DMX control systems and follows ANSI E1.20 RDM protocol. You can now get white and RGB colors all from a single light source.



# METEOR

[meteor-lighting.com](http://meteor-lighting.com)

**SPECIFICATION**

PROJECT NAME

DATE

CATALOG #

QUANTITY

<b>RS4N</b>	MODEL	<b>REV 4 WITH NEW CONSTRUCTION FRAME</b>	
<b>50W</b>	WATTAGE	<b>50</b> 50W	
<b>308C</b>	CCT / CRI	<b>308C</b> 3000K / CRI 85 + RGB	
	VOLTAGE	<b>120</b> 120V	<b>277</b> 277V
	DIMMING	<b>DMX</b> DMX dims to 0.1% (XLR Sockets)	<b>DMX(RJ45)</b> DMX dims to 0.1% (RJ45 Sockets)
	BEAM ANGLE	<b>45</b> 45° with Low Trim	<b>55</b> 55° with Low Trim
	FINISH*	<b>BLK</b> Black	<b>WHT</b> White
	ACCESSORIES	<b>SCA410</b> Sloped Ceiling Adapter 8°-12°	<b>BUB</b> Butterfly Bracket

\* Finish indicates Trim only, with standard matte silver reflector.

## TECHNICAL DETAILS

### Electrical

- 3,280lm (50W)
- Power Input: 120V or 277V
- Operating Temperature: -20°F~104°F
- Surge Protection: Built-in is 4KV
- Power Factor Greater than 0.9

### LED Features

- Color Temperature : 3000K + RGB
- CRI 85, CRI 93
- Long lasting LED luminaire tested under TM21 lumen maintenance L70 @ 60,000 Hrs

### Optics

- Flow Forming Aluminum Reflector
- Beam Angle : 45°, 55° (Low Trim only)

### Advanced Dimming

- Proprietary VX Driver™ is incorporated to all dimming options for video flicker-free lighting
- DMX : High resolution dims to 0.1% (Supports ANSI E1.20 RDM protocol)

### New Construction Housing

- Aperture : Ø4.25"
- Height : 8"
- Weight : 8.8 lbs
- Material : High Pressure Aluminum
- Non-IC Rated, insulation must be kept >1ft from housing
- Oversize Trim : 5.3"
- Ceiling Cutout : 5"
- Maximum Ceiling Thickness : 2"
- Tool-less top access allows service from above and below
- Light engine, optics, and driver(s) accessible from below ceiling

\*Note: C-Channel / Mounting Channels / T-Bar Hangers are purchased from a third party

### Warranty

- 5-year limited warranty

### Listing

- ETL Damp Location Listed
- FCC

## PERFORMANCE SUMMARY\*

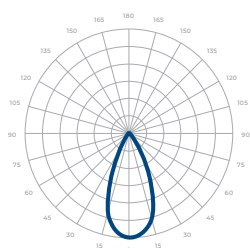
Standard				
CCT/WATTAGE	R	G	B	W
50W	8W	8W	8W	25W
	150lm	1,000lm	115lm	2,015lm

Current Consumption		
WATTAGE / VOLT	120V	277V
50W	0.48A	0.21A

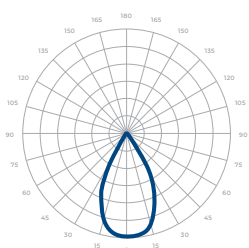
\*Beam Angle: 45° \*Tolerance ±8%

## PHOTOMETRICS

Below is a typical photometric representation of the Rev 4 fixture. Please download IES files to ensure exact photometric value.



45°



55°

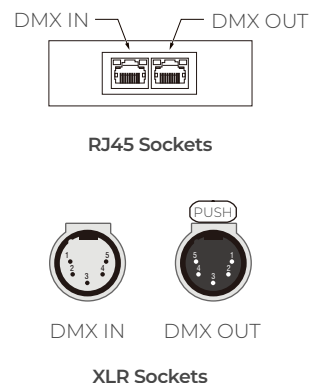
## DMX REQUIREMENTS

The Rev 4 W+RGB fixture with DMX is a **four channel dmx** unit. When placing an order, please indicate DMX address. (The DMX address will be listed on the back of the fixture). Do not connect more than 32 fixtures per DMX daisy chain.

Fixture	DMX Address			
	Red Control (ex. X)	Green Control (ex. X+1)	Blue Control (ex. X+2)	White Control (ex. X+3)
#1	1	2	3	4
#2	5	6	7	8
#3	9	10	11	12

The fixture can be connected with RJ45 or XLR sockets. DMX cables **are not** included; please refer to compatible DMX cabling list for more information. The final fixture on each daisy chain should be terminated by the use of a DMX terminator purchased from a 3rd party or from Meteor.

CONNECTION	RJ45 (CAT5e)	5-PIN XLR
Common	WHITE/BROWN(PIN7) & BROWN (PIN 8)	PIN 1
Signal -	ORANGE (PIN 2)	PIN 2
Signal +	WHITE/ORANGE (PIN 1)	PIN 3
Spare	-	PIN 4
Spare	-	PIN 5



## COMPATIBLE DMX CABLING LIST

DMX uses a cable consisting of two twisted pairs plus a shield to carry data. The cable must be specifically impedance matched for the digital DMX signal, meaning that microphone cable or other non-rated cable **must not be used to carry DMX**. Network cable (Cat5, 5e or 6 cable) may be used to carry DMX in an installation; however special consideration must be given to shielding and termination. Under no circumstances should solid core cable like Cat5 be terminated into a screw down connector.

Meteor recommends the use of Belden 9729 or Belden 9841 for DMX installation. Belden 9729/9841 is a two pair cable, which allows for a spare pair for 'out and back' type terminations if needed.

REV 4 QUIET CEILING DESIGN  
HIGH LUMEN RECESSED DOWNLIGHT

DIMENSIONS

