

REIZEN

INDIRECT ASYMMETRIC LUMINAIRE

SPECIFICATION SHEET
OUTDOOR & NATATORIUM - W+RGB

Housing

Diameter : 13" x 9.8" x 4.3" | Weight : 19.8 lbs

Material

Housing: High Pressure Die-Cast Aluminum
Lens: Tempered Glass

Power Input

150W | 120-277V

Lumen Output

11,265 lm (150W)

Dimming

DMX: High resolution dims to 0.1% (Supports ANSI E1.20 RDM protocol)

Color Quality

CRI 85

Rated Life

> 60,000 Hours (L70)

Finish



Black



White

Color Temperature



+



ColorFlip™ W+RGB

3000K

Optics



Asymmetric

Mounting



Stem
Mount



Wall
Mount

Warranty

5 Year limited warranty

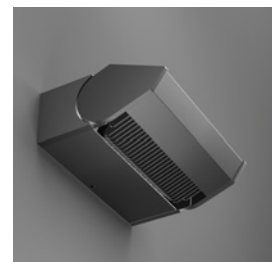
Listing



Light Shaping Prismatic Technology

Using the latest light shaping prismatic technology, the Reizen offers smooth uniform asymmetric lighting up to 40,850 lumens, and is suitable for both outdoor and natatorium use. It features Tunable White and W+RGB color changing options, offering a subtle yet dramatic flair to any space.

Superior performance, in a compact-sized fixture is a true highlight of the Reizen luminaire, which are available in both sconce and pendant forms.



SPECIFICATION

PROJECT NAME

DATE

CATALOG #

QUANTITY

| | | | | |
|-------------|--------------|---|---|---------------------------------|
| RI | MODEL | REIZEN | | |
| 308C | LIGHT SOURCE | 308C 150W Light Engine, 3000K / CRI 85 + RGB 11,265 Combined Delivered Lumens | | |
| UNV | VOLTAGE | UNV 120 – 277V | | |
| DMXR | DIMMING | DMXR DMX dims to 0.1% (RJ45 Sockets) | | |
| ASY | BEAM ANGLE | ASY Asymmetric | | |
| | FINISH | BLK Black | WHT White | |
| | MOUNTING | WLM Wall Mount | ST4 Stem 4ft | ST8¹ Stem 8ft |
| | ACCESSORIES | NO No Accessories | GSV² Glare Shield Visor | |
| | RATING | OUT³ Outdoor Rating | NAT⁴ Natatorium Rating | |

¹ Includes two 4ft stem connected by an adapter

² Please factor in change in lumen output of -10%

³ Outdoor Rating: Coating and wiring will be changed to high UV resistant and corrosion resistant materials for long-term operation in outdoor environments.

⁴ Natatorium Rating: Coating and sealant will be changed to high corrosion resistant materials to prevent damage from long-term exposure to chlorine vapors.

TECHNICAL DETAILS

Electrical

- 11,265 lm (150W)
- Power Input: Universal (120-277V)
- Operating Temperature: -40°F~113°F
- Surge Protection: Built-in is 4KV
- Power Factor Greater than 0.9

LED Features

- Color Temperature: 3000K
- CRI 85
- Long lasting LED luminaire tested under TM21 lumen maintenance L70 @ 60,000 Hrs

Optics

- Precision molded high transmittance clear PC lens
- Beam Angle: Asymmetric

Advanced Dimming

- Proprietary VX Driver™ is incorporated to all dimming options for video flicker-free lighting
- Standard 0-10V: dims to 10%

Housing

- Diameter & Weight: 13" x 9.8" x 4.3", 19.8lbs
- Diameter & Weight with Visor: 13" x 14.8" x 4.3", 22.9lbs
- Material: High Pressure Die-Cast Aluminum, Tempered Glass

Mounting

- Wall Mount with remote power
- Stem Mount with remote power

Warranty

- 5-year limited warranty

Listing

- ETL Wet Location Listed
- CE
- UKCA
- FCC
- IP 65

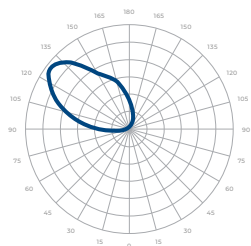
PERFORMANCE SUMMARY*

| Delivered Lumens | | | | |
|--------------------|---------|---------|---------|---------|
| LIGHT SOURCE/CCT | R (25W) | G (25W) | B (25W) | W (75W) |
| 308C (150W) | 310lm | 2,750lm | 205lm | 8,000lm |

*Beam Angle: Asymmetric *Tolerance ±8%

| Current Consumption | | |
|---------------------|-------|------|
| Light Source | 120V | 277V |
| 308C (150W) | 1.38A | 0.6A |

PHOTOMETRICS



308C

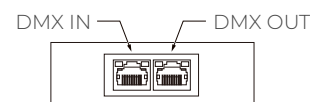
DMX REQUIREMENTS

The Reizen W+RGB fixture with DMX is a **four channel dmx** unit. When placing an order, please indicate DMX address. (The DMX address will be listed on the back of the fixture). Do not connect more than 32 fixtures per DMX daisy chain.

| Fixture | DMX Address | | | |
|---------|---------------------|-------------------------|------------------------|-------------------------|
| | Red Control (ex. X) | Green Control (ex. X+1) | Blue Control (ex. X+2) | White Control (ex. X+3) |
| #1 | 1 | 2 | 3 | 4 |
| #2 | 5 | 6 | 7 | 8 |
| #3 | 9 | 10 | 11 | 12 |

The fixture can be connected with RJ45 or XLR sockets. DMX cables **are not** included; please refer to compatible DMX cabling list for more information. The final fixture on each daisy chain should be terminated by the use of a DMX terminator purchased from a 3rd party or from Meteor.

| CONNECTION | RJ45 (CAT5e) | 5-PIN XLR |
|------------|-----------------------------------|-----------|
| Common | WHITE/BROWN(PIN7) & BROWN (PIN 8) | PIN 1 |
| Signal - | ORANGE (PIN 2) | PIN 2 |
| Signal + | WHITE/ORANGE (PIN 1) | PIN 3 |
| Spare | - | PIN 4 |
| Spare | - | PIN 5 |



RJ45 Sockets



XLR Sockets

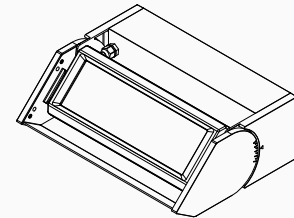
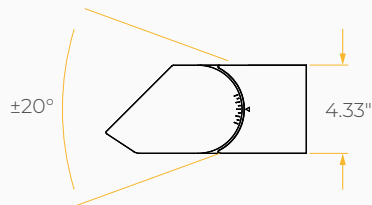
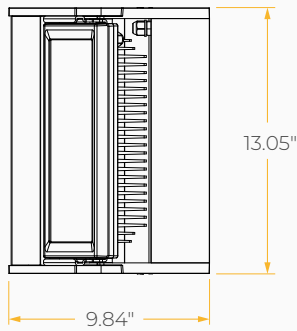
COMPATIBLE DMX CABLING LIST

DMX uses a cable consisting of two twisted pairs plus a shield to carry data. The cable must be specifically impedance matched for the digital DMX signal, meaning that microphone cable or other non-rated cable **must not be used to carry DMX**. Network cable (Cat5, 5e or 6 cable) may be used to carry DMX in an installation; however special consideration must be given to shielding and termination. Under no circumstances should solid core cable like Cat5 be terminated into a screw down connector.

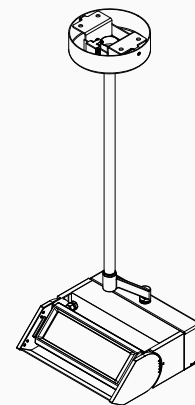
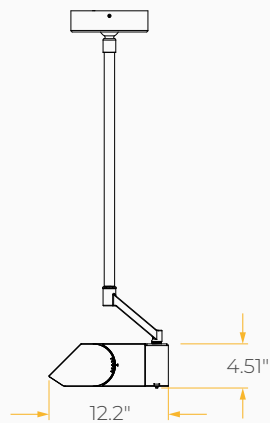
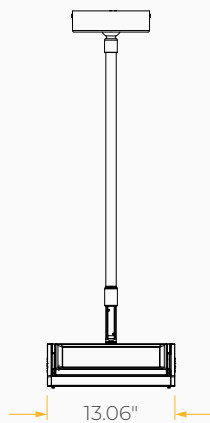
Meteor recommends the use of Belden 9729 for DMX installation. Belden 9729 is a two pair cable, which allows for a spare pair for 'out and back' type terminations if needed.

DIMENSIONS

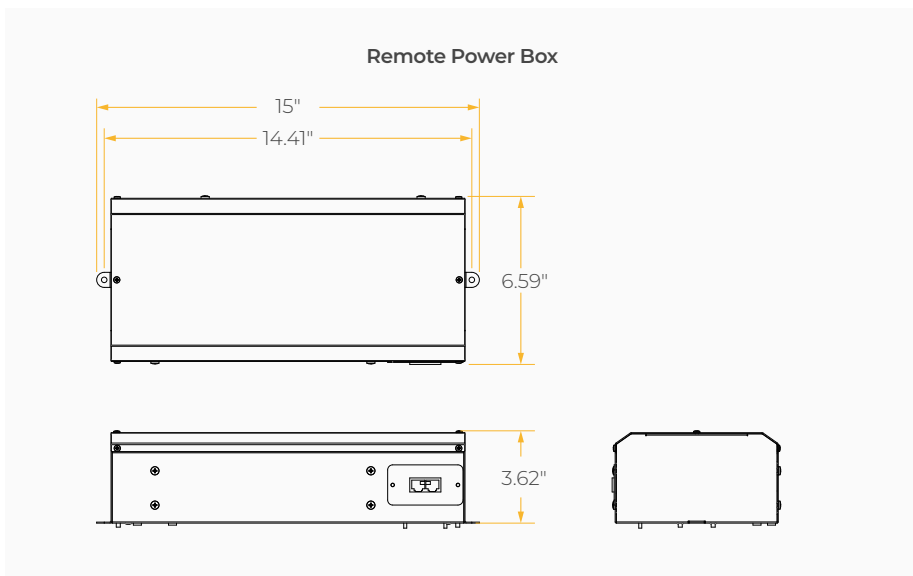
Wall Mount



Stem Mount



DIMENSIONS



ACCESSORIES

