

LANCE 4

SPECIFICATION SHEET
WHITE UP / DOWN

ARCHITECTURAL GRADE OUTDOOR WALL LUMINAIRE

Housing

Diameter : Ø4" | Height : 9.5" | Weight : 9.2 lbs

Material

Housing: High Pressure Die-Cast Aluminum

Lens: Tempered Glass

Power Input

20W, 30W | 120, 277V

Lumen Output

1,458 lm (20W) Uplight: 10W / Downlight: 10W

2,160 lm (30W) Uplight: 15W / Downlight: 15W

Dimming

Standard 0-10V: Dims to 10%

Superior 0-10V: Dims to 1%

TRC: Linear line-voltage phase control, dims to 1%

Color Quality

CRI 85, CRI 93

Rated Life

> 60,000 Hours (L70)

Finish



Black



White



Gray



Bronze

Color Temperature



2700K



3000K



3500K



4000K

Optics



15°



30°



45°



60°



Wide

Warranty

5 Year limited warranty

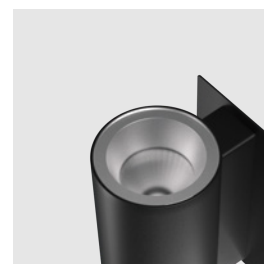
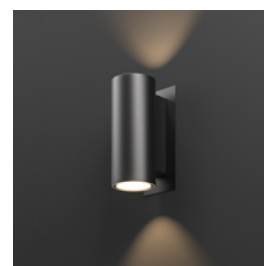
Listing



Designed for Timeless Exteriors

The Lance 4 is a high-performing range of architectural outdoor wall mounted luminaires, that delivers up to 2,160 lumens combined.

It's the perfect balance between decorative and functional, allowing you to graze brilliant surfaces and textures to make a bold after-dark statement.



METEOR

meteor-lighting.com

SPECIFICATION

PROJECT NAME	DATE
<input type="text"/>	<input type="text"/>
CATALOG #	QUANTITY
<input type="text"/>	<input type="text"/>

LA4	MODEL	LANCE 4		
<input type="text"/>	WATTAGE	20 Downlight: 10W Uplight: 10W	30 Downlight: 15W Uplight: 15W	
<input type="text"/>	CCT / CRI	278 2700K / CRI 85 309 3000K / CRI 93 408 4000K / CRI 85	279 2700K / CRI 93 358 3500K / CRI 85	308 3000K / CRI 85 359 3500K / CRI 93
<input type="text"/>	UNV	UNV 120 – 277V		
<input type="text"/>	DIMMING	NOD Non-Dimming TRC¹ Linear line-voltage phase control, dims to 1%	STV Standard 0-10V dims to 10%	SPV Superior 0-10V dims to 1%
<input type="text"/>	BEAM ANGLE	Downlight		
<input type="text"/>		15 15° 60 60°	30 30° WD² Wide	45 45°
<input type="text"/>	BEAM ANGLE	Uplight		
<input type="text"/>		15 15° 60 60°	30 30° WD² Wide	45 45°
<input type="text"/>	COLOR	BLK Black BRZ Bronze	WHT White	GRY Gray
<input type="text"/>	ACCESSORIES	NO Accessories FW^{2,8} Forward Throw 20°	WW³ Wall Wash 20° SL⁴ Solite Lens	LL² Linear Lens
<input type="text"/>	FINISH	OUT⁵ Outdoor Rating	NAT⁶ Natatorium Rated	MAR⁷ Marine Finish

¹ Option is only compatible with 120V
² Please factor in change in lumen output of -12% with WD
³ Option only available with 30° Beam Angle. Please factor in change in lumen output of -20%
⁴ Please factor in change in lumen output of -12%
⁵ Outdoor Rating: Coating and wiring will be changed to high UV resistant and corrosion resistant materials for long-term operation in outdoor environments.
⁶ Natatorium Rating: Coating and sealant will be changed to high corrosion resistant materials to prevent damage from long-term exposure to chlorine vapors.
⁷ Marine Rating: Uses high corrosion-resistant materials for the coating and sealant to prevent damage from long-term exposure to saltwater environment.
⁸ Not compatible with 60° and WD option

TECHNICAL DETAILS

Electrical

- 1,458 lm (20W) Uplight: 10W / Downlight: 10W
- 2,160 lm (30W) Uplight: 15W / Downlight: 15W
- Power Input: Universal (120/277V)
- Operating Temperature: 14°F~104°F
- Surge Protection: Built-in is 2.5KV
- Power Factor Greater than 0.9

LED Features

- Color Temperature: 2700K, 3000K, 3500K, 4000K
- CRI 85, CRI 93
- Long lasting LED luminaire tested under TM21 lumen maintenance L70 @ 60,000 Hrs

Optics

- Precision molded high transmittance clear PC lens
- Beam Angle Up & Down: 15°, 30°, 45°, 60°, Wide

Advanced Dimming

- Proprietary VX Driver™ is incorporated to all dimming options for video flicker-free lighting
- Standard 0-10V: Dims to 10%
- Superior 0-10V: Dim to 1%
- TRC: Linear line-voltage phase control, dims to 1%

Housing

- Diameter: Ø4"
- Height: 9.5"
- Material: High Pressure Die-Cast Aluminum, Tempered Glass
- Weight: 9.2 lbs

Warranty

- 5-year limited warranty

Listing

- ETL Wet Location Listed
- CE
- FCC
- IP 65

PERFORMANCE SUMMARY*

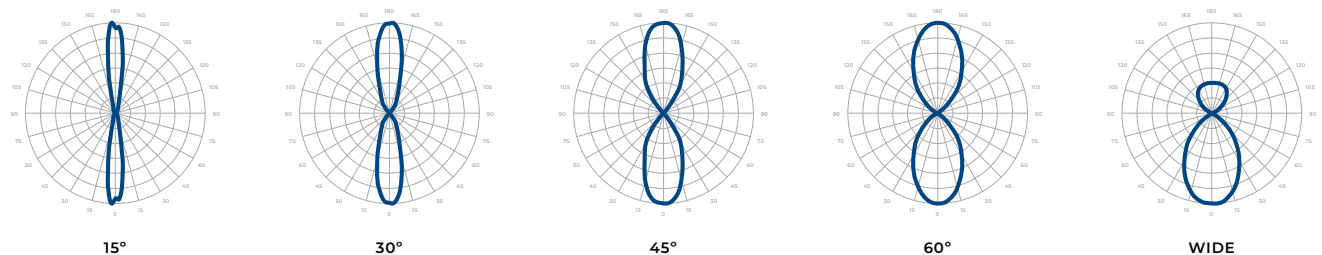
	Delivered Lumens			
CCT/WATTAGE	2700K	3000K	3500K	4000K
20W UP & DOWN (10W)	660lm	685lm	710lm	730lm
30W UP & DOWN (15W)	970lm	1,020lm	1,050lm	1,080lm

	Current Consumption	
WATTAGE / VOLT	120V	277V
20W	0.2A	0.09A
30W	0.3A	0.13A

*Tolerance ±8%

PHOTOMETRICS

Below is a typical photometric representation of the Lance 4 fixture. Please download IES files to ensure exact photometric value.



DIMENSIONS

