

# ATRIA 4

SPECIFICATION SHEET  
W+RGB

## QUIET CYLINDER WITH PRISMATIC LENS

### Housing

Diameter : Ø4.8" | Height : 12.6" | Weight : 8 lbs

### Material

Housing: High Pressure Die-Cast Aluminum

Lens: Clear Polycarbonate

### Power Input

50W / W=25W, RGB=25W | 120-277V

### Lumen Output

2,595 lm (50W)

### Dimming

DMX : High resolution dims to 0.1%

### Color Quality

CRI 85

### Rated Life

> 60,000 Hours (L70)

### Finish



Black



White

### Color Temperature



3000K



ColorFlip™ W+RGB

### Optics



60°



Wide

### Mounting



Stem  
Mount



Adjustable  
Cable



Yoke  
Mount



Surface  
Mount

### Warranty

5 Year limited warranty

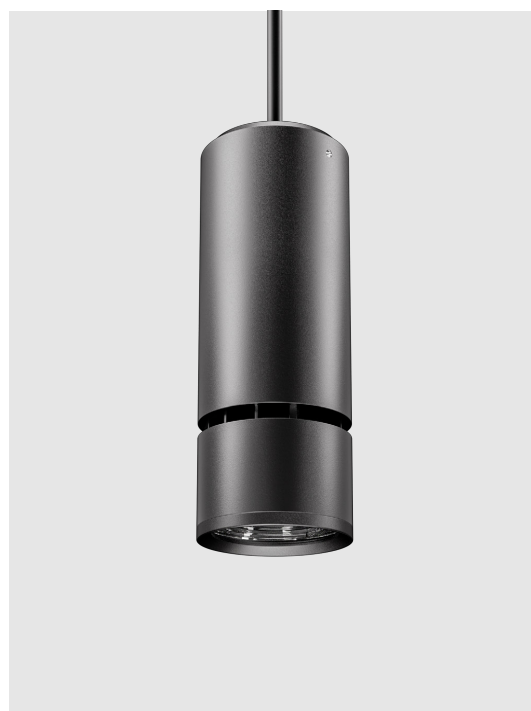
### Listing



Masterfully engineered and aesthetically refined.

The Atria 4 is a high-performing cylinder for mixed applications. The cylinder is compatible with our ColorFlip™ color-changing technologies, and feature decorative options in the glow ring and mid-lit reveal.

A prismatic lens offers superior light transmission and minimizes glare.



METEOR

[meteor-lighting.com](https://meteor-lighting.com)

**SPECIFICATION**

PROJECT NAME

DATE

CATALOG #

QUANTITY

<input type="text" value="AS4"/>	MODEL	<b>ATRIA 4 W+RGB</b>		
<input type="text" value="50"/>	WATTAGE	<b>50</b> 50W		
<input type="text" value="308C"/>	CCT / CRI	<b>308C</b> 3000K / CRI 85+RGB		
<input type="text" value="UNV"/>	VOLTAGE	<b>UNV</b> 120 – 277V		
<input type="text"/>	DIMMING	<b>DMX<sup>3</sup></b> DMX dims to 0.1% (XLR Sockets)	<b>DMX(RJ45)<sup>3</sup></b> DMX dims to 0.1% (RJ45 Sockets)	
<input type="text"/>	BEAM ANGLE	<b>60</b> 60°	<b>WD<sup>1</sup></b> Wide	
<input type="text"/>	FINISH	<b>BLK</b> Black	<b>WHT</b> White	
<input type="text"/>	RIM FINISH	<b>STD</b> Standard Trim	<b>GLR</b> Glowing Ring	<b>MLT</b> Mit-Lit Trim
<input type="text"/>	MOUNTING	<b>SUM</b> Surface Mount <b>AD10</b> Adjustable Cable 10ft <b>SAD10</b> Sloped Adjustable Cable 10ft	<b>ST2</b> Stem 2ft <b>WLM</b> Wall Mount	<b>ST4</b> Stem 4ft <b>YKM</b> Yoke Mount
<input type="text"/>	ACCESSORIES	<b>NO</b> No Accessories	<b>DF<sup>2</sup></b> Diffuser	<b>CT<sup>4</sup></b> Conduit Mount

<sup>1</sup> Please factor in -20% change in lumen output with diffuser  
<sup>2</sup> Please factor in change in lumen output with diffuser(-20% with WD; -12% with other degrees)  
<sup>3</sup> DMX option not compatible with WLM  
<sup>4</sup> CT only compatible with ST and AD mounting types

**TECHNICAL DETAILS**

**Electrical**

- 2,595 lm (50W)
- Power Input: Universal (120-277V)
- Operating Temperature: -13°F~104°F
- Surge Protection: Built-in is 4KV
- Power Factor Greater than 0.9

**LED Features**

- Color Temperature : 3000K + RGB
- CRI 85
- Long lasting LED luminaire tested under TM21 lumen maintenance L70 @ 100,000 Hrs
- Lumen Maintenance > 0.90 at 60,000 hours

**Optics**

- Precision molded high transmittance clear PC lens
- Beam Angle: 60°, Wide

**Advanced Dimming**

- Proprietary VX Driver™ is incorporated to all dimming options for video flicker-free lighting
- DMX: High resolution dims to 0.1% (Supports ANSI E1.20 RDM protocol)

**Housing**

- Diameter: Ø4.8"
- Height: 12.6"
- Material: High Pressure Die-Cast Aluminum, PC Lens
- Weight: 8 lbs

**Mounting**

- Stem 2ft or 4ft; 45° Swivel Canopy Included
- Adjustable Cable 10ft
- Surface Mount
- Yoke Mount
- Sloped Adjustable Cable 10ft

**Warranty**

- 5-year limited warranty

**Listing**

- ETL Wet Location Listed
- CE
- FCC

**PERFORMANCE SUMMARY\***

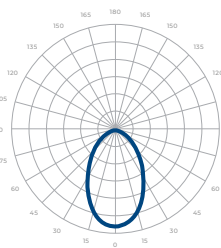
Delivered Lumens				
CCT/WATTAGE	R	G	B	W
50W	8W	8W	8W	25W
	120lm	790lm	95lm	1,590lm

Current Consumption		
WATTAGE / VOLT	120V	277V
50W	0.48A	0.21A

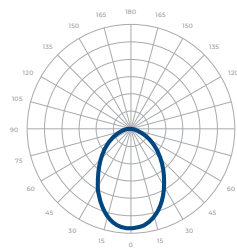
\*Beam Angle: 60° \*Tolerance ±8%

**PHOTOMETRICS**

Below is a typical photometric representation of the Atria 4 fixture. Please download IES files to ensure exact photometric value.



60°



Wide

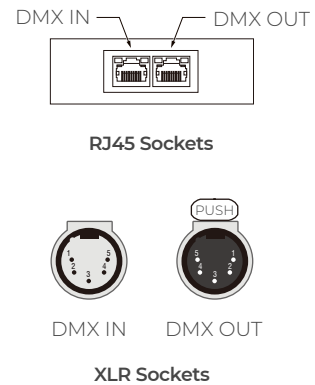
## DMX REQUIREMENTS

The Atria 4 W+RGB fixture with DMX is a **four channel dmx** unit.  
 When placing order, please indicate DMX address (refer to DMX Address example below).  
 The DMX address will be listed on the back of the fixture.

Fixture	DMX Address			
	Red Control (ex. X)	Green Control (ex. X+1)	Blue Control (ex. X+2)	White Control (ex. X+3)
#1	1	2	3	4
#2	5	6	7	8
#3	9	10	11	12

The LED fixture provide RJ45 Socket or XLR socket to connect. (DMX cable **not** included.)  
 The final fixture should be terminated by the use of DMX Terminator (by others).

CONNECTION	RJ45 (CAT5e)	5-PIN XLR
Common	WHITE/BROWN(PIN7) & BROWN (PIN 8)	PIN 1
Signal -	ORANGE (PIN 2)	PIN 2
Signal +	WHITE/ORANGE (PIN 1)	PIN 3
Spare	-	PIN 4
Spare	-	PIN 5

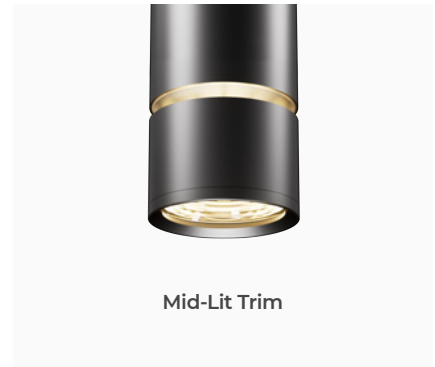
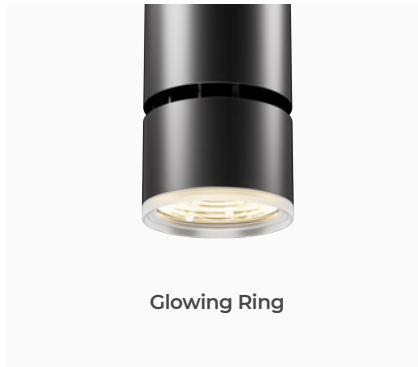
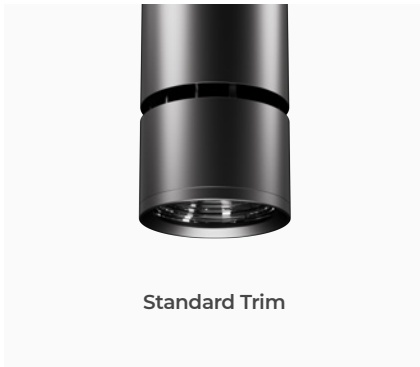


## COMPATIBLE DMX CABLING LIST

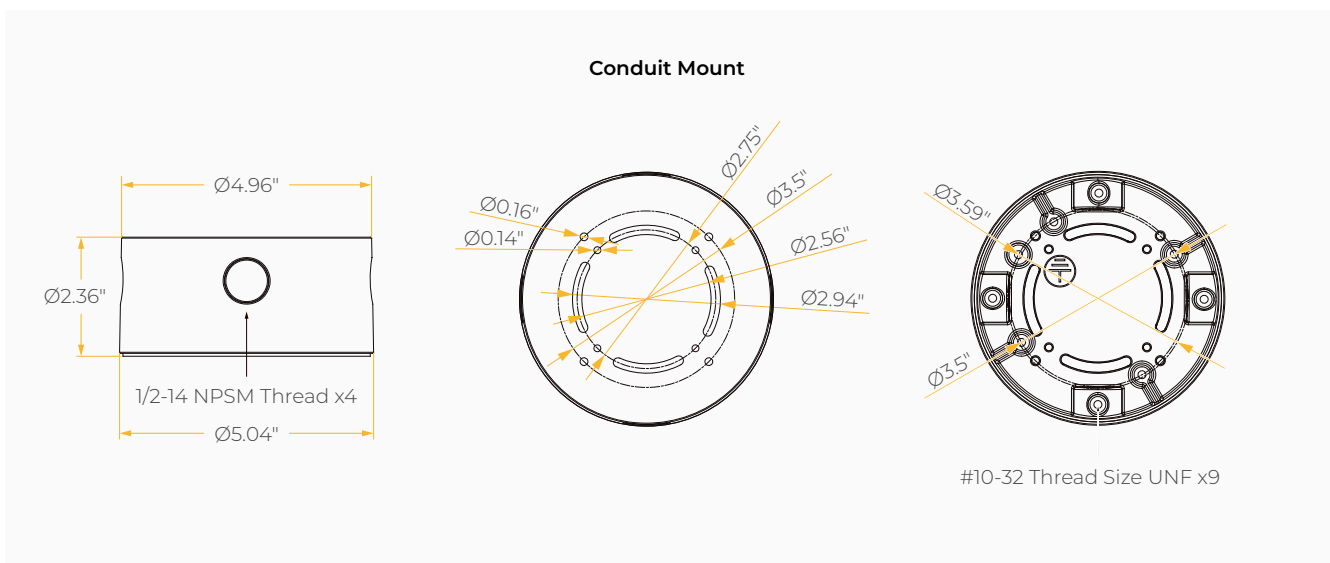
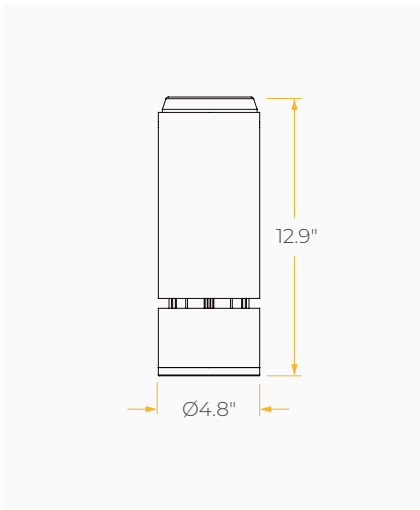
DMX uses a cable consisting of two twisted pairs plus a shield to carry data. The cable must be specifically impedance matched for the digital DMX signal, meaning that microphone cable or other non-rated cable **must not be used to carry DMX**. Network cable (Cat5, 5e or 6 cable) may be used to carry DMX in an installation; however special consideration must be given to shielding and termination. Under no circumstances should solid core cable like Cat5 be terminated into a screw down connector.

Meteor recommends the use of Belden 9729 or Belden 9841 for DMX installation. Belden 9729/9841 is a two pair cable, which allows for a spare pair for 'out and back' type terminations if needed.

**RIM FINISH**



**DIMENSIONS**



**MOUNTING OPTIONS\***

\*Junction box not included

